

# HD 1080P 4 in ONE CVI/TVI/AHD CAMERA



## Specifications

Parameter			
Camera			
Model	NIRBHTG2		
Image Sensor	1.0MP CMOS Image Sensor	1.3MP CMOS Image Sensor	2.0MP CMOS Image Sensor
SIGNAL	PAL / NTSC		
Effective Pixels	1280(H)*720(V)	1280(H)*960(V)	1920(H)1080(V)
Min. Illumination	0.01Lux@ (F1.2,AGC ON) ,0 Lux with IR		
Shutter	1/50s-1/50000s 1/60s-1/60000s		
Video Frequency	1920x1080@25fps; 1920x1080@30fps 1280x960@25 fps; 1280x960@30 fps 1280x720@25 fps; 1280x720@30 fps		
Synchronization	Internal		
IR LEDs & Length	2pcs Array IR,IR Range:50M		
Lens	2.8-12mm Megapixel		
Video Output	TVI/ CVBS		
Noise Reduction	3D-DNR		
OSD	Support coaxial control		
AWB	ATW/MWB		
Day/Night	IR cut filter with auto switch		
Transmission Distance	Over 500m via 75-3 coaxial cable		
Power Supply	DC 12V±10%		
Working Environment	-10°C~+55°C/Less than 95%RH(no condensation)		
Power Consumption	8W MAX		

### Key features:

- 2pcs Array IR,IR Range:50M
- 2.8-12 varifocal lens
- Water Resistant Rate: IP66

### Feature

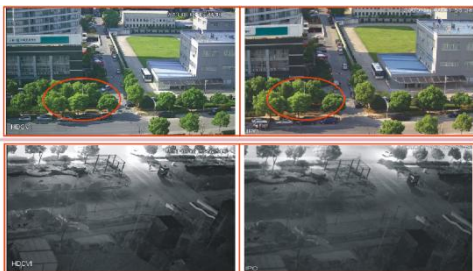
★Ensure high-quality image transmission.  
HDTVI avoids the interference of high frequency wireless electromagnetic radiation from the nature of the technical principle by using the low-frequency analog modulation technology, so that HDTVI is able to guarantee high-quality image transmission, even under strong interference environment.

★Long distance transmission  
Compared with the traditional HD-SDI technology, HDTVI also can transfer 720P and 1080P effective resolution of high definition video, but HDTVI has obvious advantages on the transmission distance, at least 500 meters by using the 75-3 cable with very low signal distortion.

★Low cost  
The upgrading of current HD SDI devices can seamlessly switch to HDTVI products and achieve full high-definition monitoring by replacing the CCTV Camera and DVR.

HD TVI

HD IPC



HD TVI

HD SDI

